

Anti-SDHB Rabbit Monoclonal Antibody
Catalog # ABO16754**Specification**

Anti-SDHB Rabbit Monoclonal Antibody - Product Information

Application	WB, IHC, IP
Primary Accession	P21912
Host	Rabbit
Isotype	Rabbit IgG
Reactivity	Rat, Human, Mouse
Clonality	Monoclonal
Format	Liquid

Description

Anti-SDHB Rabbit Monoclonal Antibody . Tested in WB, IHC, IP applications. This antibody reacts with Human, Mouse, Rat.

Anti-SDHB Rabbit Monoclonal Antibody - Additional Information

Gene ID 6390

Other Names

Succinate dehydrogenase [ubiquinone] iron-sulfur subunit, mitochondrial, 1.3.5.1, Iron-sulfur subunit of complex II, Ip, SDHB, SDH, SDH1

Application Details

WB 1:500-1:2000
IHC 1:50-1:200
IP 1:50

Contents

Rabbit IgG in phosphate buffered saline, pH 7.4, 150mM NaCl, 0.02% sodium azide and 50% glycerol, 0.4-0.5mg/ml BSA.

Immunogen

A synthesized peptide derived from human SDHB

Purification

Affinity-chromatography

Storage

Store at -20°C for one year. For short term storage and frequent use, store at 4°C for up to one month. Avoid repeated freeze-thaw cycles.

Anti-SDHB Rabbit Monoclonal Antibody - Protein Information

Name SDHB

Synonyms SDH, SDH1

Function

Iron-sulfur protein (IP) subunit of the succinate dehydrogenase complex (mitochondrial respiratory chain complex II), responsible for transferring electrons from succinate to ubiquinone (coenzyme Q) (PubMed: [26925370](http://www.uniprot.org/citations/26925370), PubMed: [27604842](http://www.uniprot.org/citations/27604842)). SDH also oxidizes malate to the non-canonical enol form of oxaloacetate, enol- oxaloacetate (By similarity). Enol-oxaloacetate, which is a potent inhibitor of the succinate dehydrogenase activity, is further isomerized into keto-oxaloacetate (By similarity).

Cellular Location

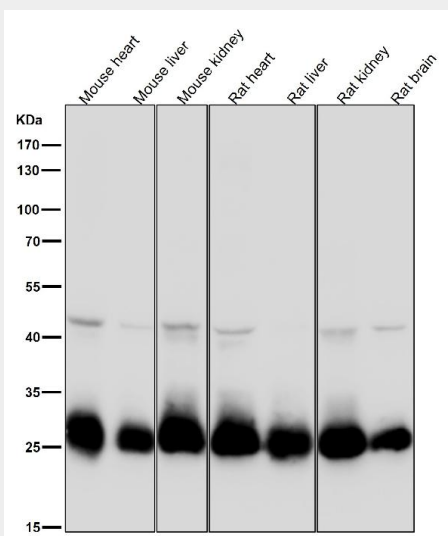
Mitochondrion inner membrane; Peripheral membrane protein; Matrix side

Anti-SDHB Rabbit Monoclonal Antibody - Protocols

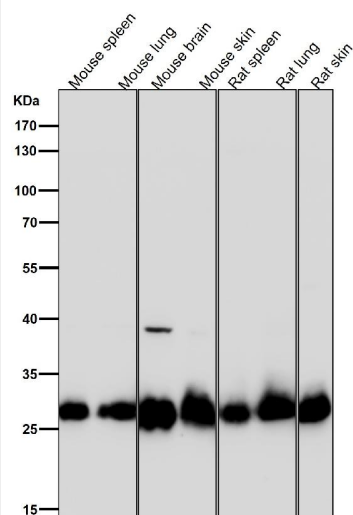
Provided below are standard protocols that you may find useful for product applications.

- [Western Blot](#)
- [Blocking Peptides](#)
- [Dot Blot](#)
- [Immunohistochemistry](#)
- [Immunofluorescence](#)
- [Immunoprecipitation](#)
- [Flow Cytometry](#)
- [Cell Culture](#)

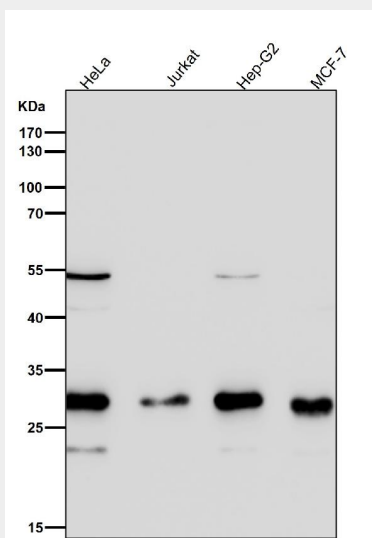
Anti-SDHB Rabbit Monoclonal Antibody - Images



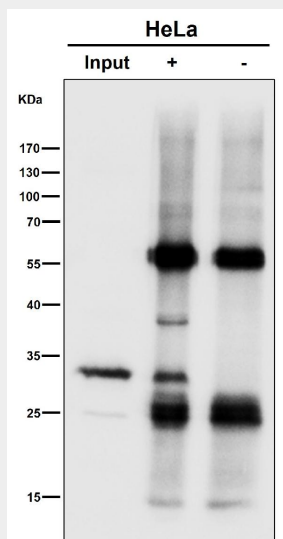
All lanes use the Antibody at 1:3W dilution for 1 hour at room temperature.



All lanes use the Antibody at 1:3W dilution for 1 hour at room temperature.



All lanes use the Antibody at 1:3W dilution for 1 hour at room temperature.



Immunoprecipitate (IP) analysis using the Antibody at 1:50 dilution. (wb at 1:1K dilution)